

PHOTOS OF STRUCTURAL INSPECTION OF THE GALERA POINT LIGHTHOUSE



Pic. 1 Lighthouse location



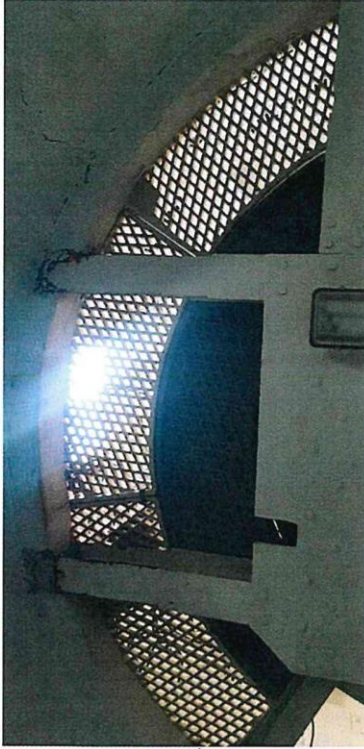
Pic. 2 Western view of the lighthouse



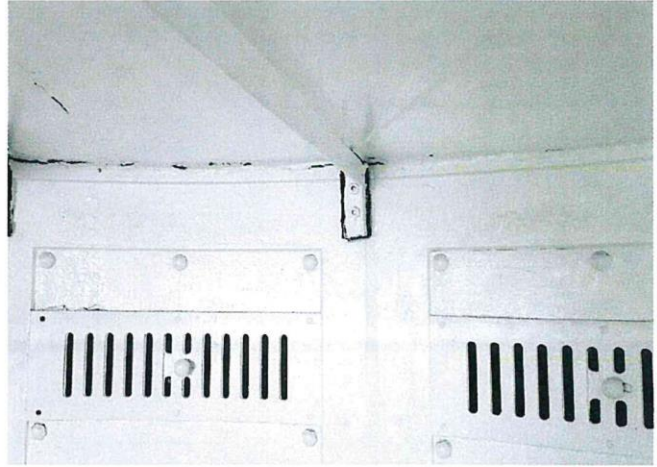
Pic. 3 Vertical pipe bolted to ground floor slab



Pic. 4a. Top of vertical pipe connected to the soffit of the 3rd floor



Pic. 4b. Third (3rd) floor framing



Pic. 5 Steel plate walls supporting the roof slab



Pic. 6. Soffit of 1st and 2nd floor slabs.



Pic. 7 Ladder from ground to 1st floor



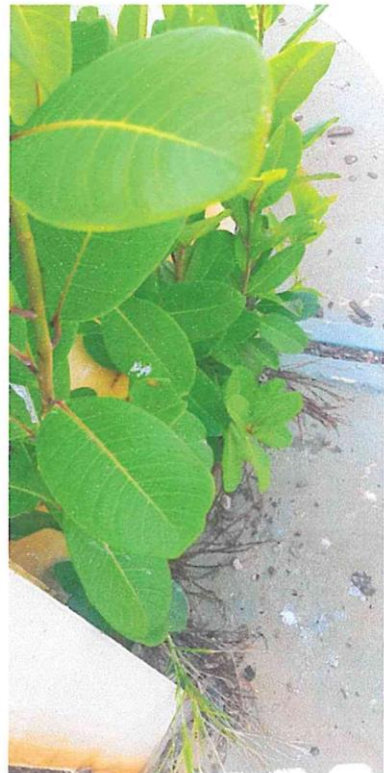
Pic 8. Ladder from 1st floor to 2nd floor.



Pic. 9 Ladder from 2nd floor to 3rd floor.



Pic. 10 Cantilever slab and corrosion of steel member



Pic. 11 Trees growing on the cantilever



Pic. 12 Corrosion of the metal hand rails of the cantilever



Pic. 13 Crack in the cantilever slab



Pic. 14 Corrosion of ground floor ladder



Pic. 15 Corrosion of first floor ladder



Pic. 16 Corrosion of second floor ladder



Pic. 17 Cracks of the external protective paint at the eastern face of the lighthouse



Pic. 18 Cracks of the external protective paint at the base of the eastern face of the lighthouse



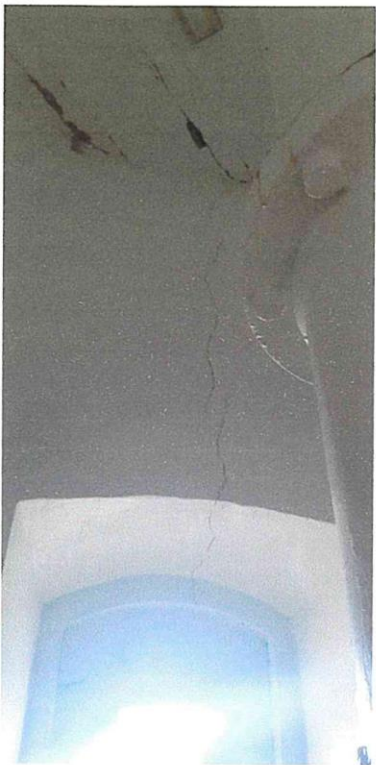
Pic. 19 Typical crack on the suspended floor slabs



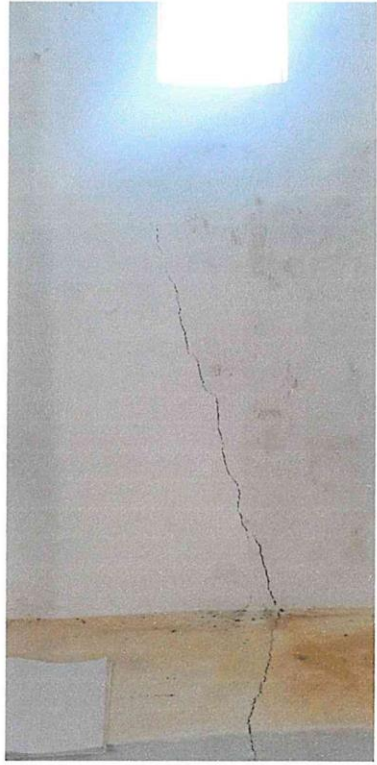
Pic. 20 Western face of lighthouse showing vertical crack



Pic. 21 Crack at soffit of doorway lintel



Pic. 22 Vertical crack on the lintel beam of 1st floor window propagating on the inside of the wall



Pic. 23 Vertical crack on the inside of the wall of the 2nd floor